

# System Requirements

## SCHEMA CDS

## Edition

Version: 2018.4 / Date: 5/3/2018

## Imprint

SCHEMA Holding GmbH  
Hugo-Junkers-Straße 15-17, D-90411 Nürnberg  
Phone: +49 911 / 58 68 61 - 0 • Fax: + 49 911 / 58 68 61 - 70  
E-mail: [info@schema.de](mailto:info@schema.de) • URL: <http://www.schema.de>  
Commercial Register: Amtsgericht Nürnberg, HRB 15973  
VAT-IdNr.: DE 197675263  
E-mail: [info@schema.de](mailto:info@schema.de) • URL: <http://www.schema.de>

Executives:  
Stefan Freisler  
Marcus Kesseler

Publisher:  
SCHEMA Holding GmbH  
Contact: [info@schema.de](mailto:info@schema.de)

## Colophon

This documentation was created, copy edited and published with the ST4 DocuManager.

# Rights

The following designations are the titles, marks or trademarks of the companies mentioned:

- Apache, log4net from Apache Software Foundation, USA
- Apple®, iTunes® and iTunes Store<sup>SM</sup> from Apple Inc., USA
- Google™ and Google Chrome from Google, USA
- ImageMagick® from ImageMagick Studio LLC, USA and/or other countries
- Intel®, Pentium® and Xeon™ from Intel Corporation, USA and/or other countries
- Java™, JavaScript™, Oracle®, Oracle 10g®, Oracle 11g®, Oracle Data Provider for .NET, Oracle Text, Oracle Knowledge Base from Oracle Corporation, USA and/or other countries
- Mozilla® and Firefox® from Mozilla Foundation, USA and/or other countries
- NODE.JS® from Joyent Inc., USA and/or other countries
- Access®, Active Directory®, Excel®, Internet Explorer®, JScript®, Microsoft®, PowerPoint®, SQL Server®, Segoe®, Visual C#®, Visual C++®, Visual Studio®, Windows Server®, Windows® from Microsoft Corp. USA and/or other countries
- Safari® from Apple Inc., USA and/or other countries
- Unicode® from Unicode Inc.
- W3C®, CSS™, DOM™, XHTML™, XSL™ from World Wide Web Consortium

The use of screenshots of Microsoft products is with permission from Microsoft.

Parts of the SCHEMA® Content Delivery Server were created using .NET Controls DotNetBar from DevComponents Inc., USA. DotNetBar is a trademark of the DevComponents Inc. All rights reserved.

Parts of the SCHEMA® Content Delivery Server were created using the Sencha Touch library from Sencha Inc., USA. Sencha Touch is a trademark of Sencha Inc. All rights reserved. All rights reserved.

Parts of the SCHEMA® Content Delivery Server were created using further third-party software. Read the license agreements in the `Licenses` directory.

All trademarks and services listed in this document are the property of the respective owners.

It is not permitted to duplicate or transfer any information from this documentation of SCHEMA® Content Delivery Server without the prior consent of SCHEMA Holding GmbH.

SCHEMA Holding GmbH. All rights reserved. 1995-2018.

Disclaimer:

SCHEMA is not responsible for the availability of third-party websites. SCHEMA accepts no responsibility for the content of external links. Exclusive responsibility for the content and availability of linked sites lies with the website operators. This applies to all links in our documentation and all site contents to which these links lead.

# Table of Contents

1	System Requirements for the SCHEMA Content Delivery Server.....	5
1.1	System Requirements for Test System .....	5
1.2	System Requirements for Intranet Installation.....	6
1.3	System Requirements for Installation with Internet Access .....	8
2	System Requirements SCHEMA Portal.....	12

# 1 System Requirements for the SCHEMA Content Delivery Server

The system requirements for the SCHEMA CDS vary depending on the intended application scenario.

## 1.1 System Requirements for Test System

You can install all components for a test system on one server computer.

**Scenario Test System** SCHEMA recommends the following scenario for a test system installation. For differing installations please contact SCHEMA.

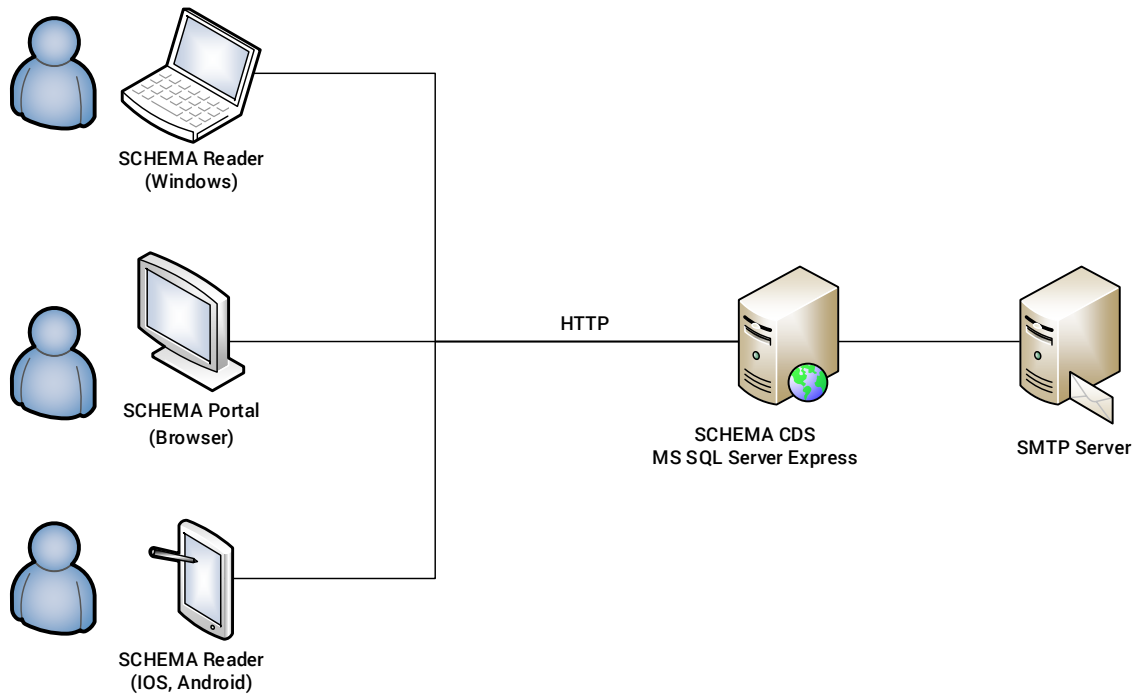


Fig. 1: Scenario Test System

<b>Hardware</b>		
<b>RAM</b>		4 GB
<b>CPU</b>		2 cores (physical)
<b>Hard Disk Space</b>	Application	2 GB
	Repository	At least 5 GB (depending on the size and number of content packages also more)
	Database	At least 3 GB

Operating System	Software
Windows 10 -or- Windows Server 2012 R2 (Foundation, Essentials, Standard or Datacenter) -or- Windows Server 2016 (Essentials, Standard or Datacenter)	Microsoft .NET Framework Version 4.6.1 or higher
<b>Software</b>	
Microsoft SQL Server 2014 Express (all Express editions) -or- Microsoft SQL Server 2014 SP2 Express (all Express editions) -or- Microsoft SQL Server 2016 SP1 Express (all Express editions) -or- Microsoft SQL Server 2014 SP2 (Standard or Enterprise) -or- Microsoft SQL Server 2016 SP1 (Standard or Enterprise)	
For full-text search: Adobe PDF IFilter V11 or higher	
For creating thumbnails: ImageMagick V6.8.8-5 Q16 or higher Ghostscript 9.10 or higher	

## 1.2 System Requirements for Intranet Installation

You need at least three server computers.

### Intranet Scenario

SCHEMA recommends the following scenario for an installation with information deployment over an intranet/extranet. For other installations, please contact SCHEMA.

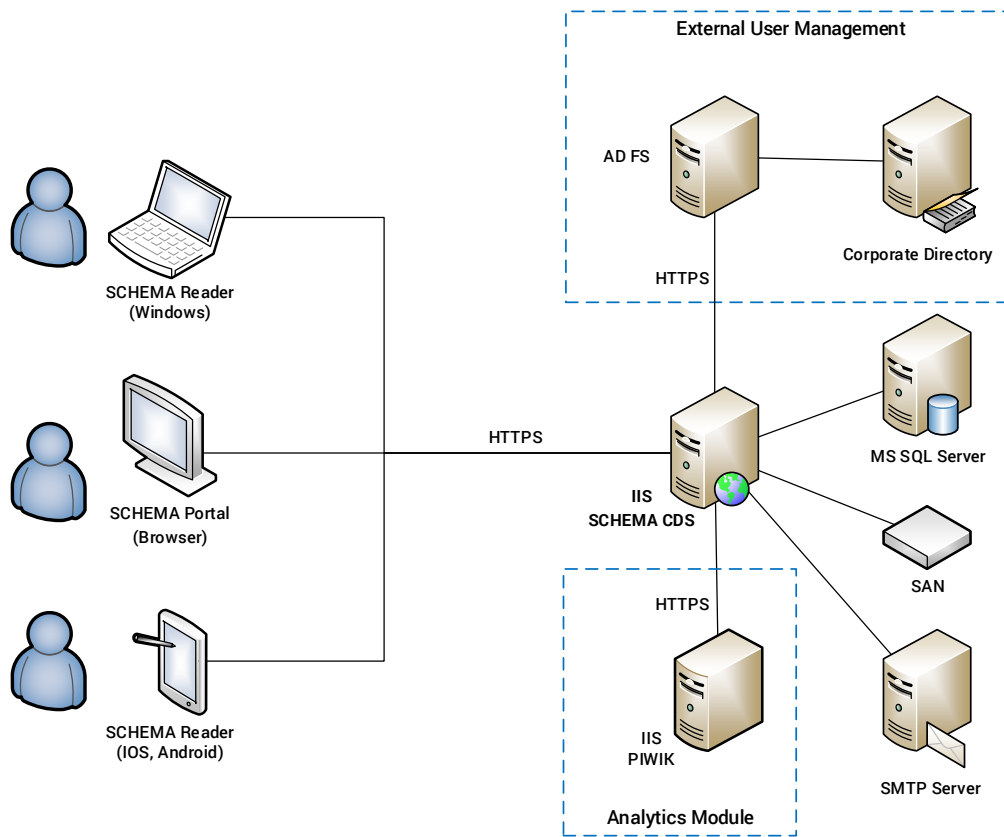


Fig. 2: Intranet Scenario

### SCHEMA Content Delivery Server Computer

Hardware		
RAM		8 GB
CPU		4 cores (physical)
Hard Disk Space	Application	2 GB
	Repository	At least 50 GB (depending on the size and number of content packages also more)
		SAN storage recommended
Software		
Operating System	Windows Server 2012 R2 (Foundation, Essentials, Standard or Datacenter) -or- Windows Server 2016 (Essentials, Standard or Datacenter) Microsoft .NET Framework version 4.6.1 or higher	

Software	
Web Server	Microsoft IIS 8.5 or higher
For full-text search	Adobe PDF IFilter V11 or higher
For creating thumbnails	ImageMagick V6.8.8-5 Q16 or higher Ghostscript 9.10 or higher

### Database Server Computer

Software	Hardware
Microsoft SQL Server 2014 SP2 (Standard or Enterprise)  -or- Microsoft SQL Server 2016 SP1 (Standard or Enterprise)	At least 10 GB (depending on the size and number of content packages also more)

### AD FS Computer

Software	Hardware
Microsoft AD FS 3.0 or higher	According to system requirements of the software

### Analytics Server (PIWIK)

For usage statistics with the Analytics module

Software	Hardware
Piwik 2.16.0 or higher Piwik plugin CustomDimensions Microsoft IIS 8.5 or higher	According to system requirements of the software

## 1.3 System Requirements for Installation with Internet Access

You need at least four server computers.

#### Internet Scenario

SCHEMA recommends the following scenario for an installation with public information deployment over the internet. For other installations, please contact SCHEMA.



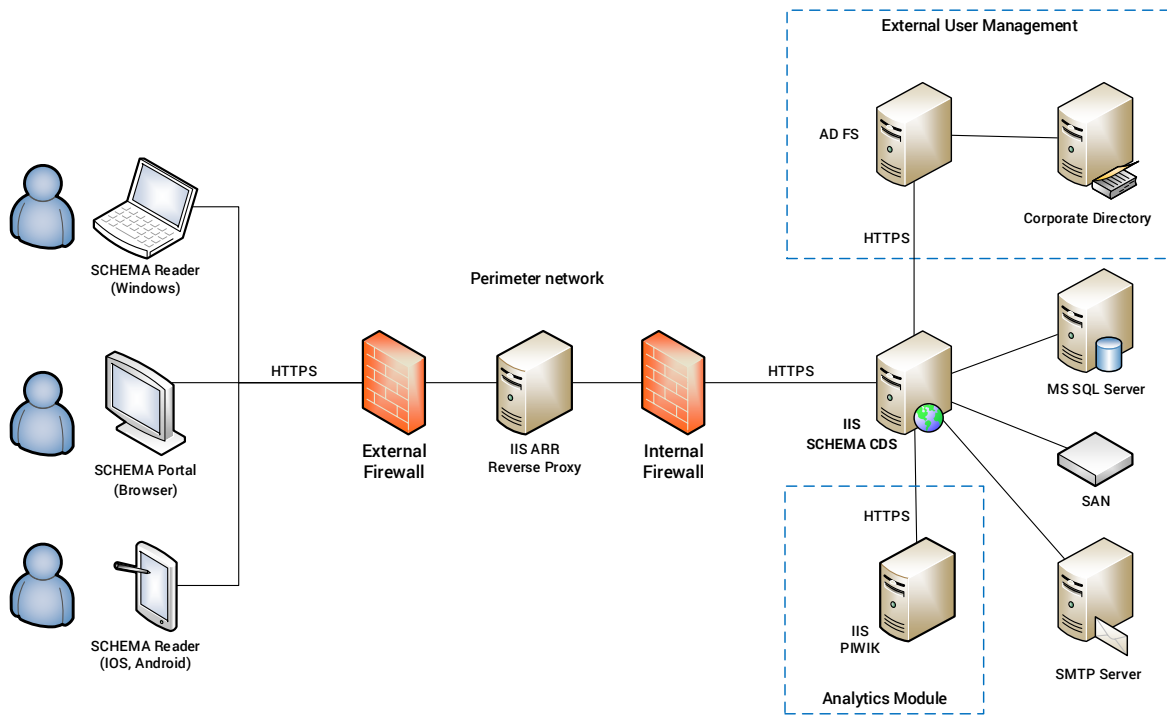


Fig. 3: Internet Scenario

### SCHEMA Content Delivery Server Computer

<b>Hardware</b>		
RAM		8 GB
CPU		4 cores (physical)
Hard Disk Space	Application	2 GB
	Repository	At least 50 GB (depending on the size and number of content packages also more)
		SAN storage recommended
<b>Software</b>		
Operating System	Windows Server 2012 R2 (Foundation, Essentials, Standard or Datacenter) -or- Windows Server 2016 (Essentials, Standard or Datacenter) Microsoft .NET Framework version 4.6.1 or higher	
Web Server	Microsoft IIS 8.5 or higher	
For full-text search	Adobe PDF IFilter V11 or higher	

Software	
For creating thumbnails	ImageMagick V6.8.8-5 Q16 or higher Ghostscript 9.10 or higher

### Database Server Computer

Software	Hardware
Microsoft SQL Server 2014 SP2 (Standard or Enterprise)  -or- Microsoft SQL Server 2016 SP1 (Standard or Enterprise)	At least 10 GB (depending on the size and number of content packages also more)

### Reverse Proxy Computer

Software	Hardware
Microsoft IIS 8.5 or higher  Application Request Routing Module	According to system requirements of the software

## AD FS Computer

Software	Hardware
Microsoft AD FS 3.0 or higher	According to system requirements of the software

## Analytics Server (PIWIK)

For usage statistics with the Analytics module

Software	Hardware
Piwik 2.16.0 or higher Piwik plugin CustomDimensions Microsoft IIS 8.5 or higher	According to system requirements of the software

## 2 System Requirements SCHEMA Portal

<b>Hardware</b>	
<b>RAM</b>	1 GB
<b>CPU</b>	1 CPU Dual-Core

<b>Supported Browser</b>
Internet Explorer (Version 10.0 or higher) -or- Microsoft Edge -or- Mozilla Firefox (Version 41 or higher) -or- Google Chrome (Version 45 or higher)

<b>Smartphones and Tablets</b>
Google Chrome (Version 45 or higher) under Android and iOS
Safari version iOS 7 or higher



COMPLEX DOCUMENTS **MADE EASY.**